

Swig Tools



Resize copper tubing to factory specs, inside and outside, in less than a minute using the copper pipe sizing tool for Swig Tools.

The tool comes in five sizes: 3/4, 1, 1 1/4, 1 1/2 and 2 inches. Stop leaks before they start – there are no ends to throw away and copper isn't wasted. Compression and sweat fittings will work best on the newly sized pipe. Size each piece of copper using these three easy steps: 1) Deburr tube and lubricate the tool and the copper end with a food grade lubricant. 2) Hammer the tool onto the copper. 3) Twist the tool off the pipe. (608) 845-8909, swigtools.com

American Augers

American Augers has expanded its maxi-rig product lineup to now include the DD-440T



directional drill. Equipped with a Caterpillar C-15 540-horsepower diesel engine,

the DD-440T provides 440,000 pounds of maximum thrust/pullback, and excels with excavator track driven mobility. The carriage system provides, a rack and pinion, two pinion drive with adjustable force limiter. The rotary system includes a three pinion and gear drive with infinitely variable torque, 60,000 foot-pounds of maximum rotary torque, rear mounted mud swivel that provides up to 650 gallon per minute flow, slip spindle, and a 3-inch fluid course. Other standard features include: 10-18 degree drill angle; triple jaw wrenches with a 12-inch separation; wrenches that travel the full length of the thrust frame; 154,000 foot-pounds of maximum breakout torque, 101,700 foot-pounds of maximum makeup torque, H-Beam type front and rear safety hold down system with struts, and the ability to utilize Range II drill pipe. (800) 324-4930, americanaugers.com

Garlock Sealing Technologies

The MULTI-SWELL, self-loading general service gasket creates its own load when it comes into contact with water, virtually eliminating the most common cause of gasket failure – insufficient load. The MULTI-SWELL gasket interacts with water



swelling and creating load, thereby adapting easily to all types of flange designs, making the MULTI-SWELL gasket ideal for a broad range of applications, including water pumps, valves and cast iron flanges. The MULTI-SWELL gasket seals flanges in less than perfect condition, minimizing maintenance. Twice as soft as conventional gaskets, the MULTI-SWELL gasket cuts easily and conforms readily even to corroded or irregular flanges, ensuring tight seals with lower loads. Where vibration may cause bolt load loss, or where load loss occurs because of bolt relaxation, such as in pump and compressor applications, the self-loading gasket counters that loss, preventing leakage and weeping. Both environmentally and budget-friendly, MULTI-SWELL gaskets help reduce the expenses associated with vegetable fiber and cork gaskets. (800) 448-6688, multiswell.com

Shell Rotella



The advanced engine protection offered by Shell Rotella T motor oil with Triple Protection technology is now available in a brand new bottle. The bottle features a new, ergonomic design, making it easier to

handle and pour. The top handle on the new Shell Rotella T with Triple Protection bottle makes carrying easier, and the side handle makes pouring easier and more comfortable. The new bottle is more environmentally friendly as well. The bottle uses less plastic and no longer includes a foil seal, making it convenient to recycle. Shell Lubricants has also introduced a new "3 in 1" case which offers three one-gallon bottles in one case for easier pick-up and handling. Shell Rotella T motor oil with Triple Protection technology provides enhanced engine protection, cleanliness and compatibility with exhaust after-treatment devices such as diesel particulate filters. The advanced formulation meets the latest API CJ-4 specifications for heavy-duty diesel engine oils and the latest engine builder specifications. (973) 316-1665

Radiodetection

The new RD2000 SuperC.A.T range of high performance cable avoidance tools are an



enhanced version of the RD2000 launched 18 months ago. To address all applications and budgets, the SuperC.A.T range is available in a number of receiver and

transmitter combinations. The SuperC.A.T+ has been developed for high performance location of multiple utilities. To support the telecoms market, the high frequency SuperC.A.TTL detects 131kHz or 65kHz as high frequency active locates are known to be more effective when buried assets are well insulated (e.g. twisted-pair telecom cables or insulated pipe joints). Using the SuperC.A.TS with a sonde enables location of pipes such as cast iron, clay, concrete and plastic and finally for metallic pipes with a Cathodic Protection System, the SuperC.A.TCPS is the receiver of choice. The SuperC.A.T incorporates a number of features for added accuracy, safety and ease of use. These include depth and current measurement, a "user memory" that saves the last used configuration and StrikeAlert, that alerts the user to unexpectedly shallow cables and utility lines in Power and Active transmitter modes. The SuperC.A.T range has the ability to reject unwanted signals in the most demanding environments. Even with interference from overhead electrical cables and congested sites, this enhanced signal processing ensures that the information displayed is accurate and repeatable. (207) 647-9495 ext 186, radiodetection.sp.com

ARNCO Corp.

ARNCO Corp. offers the Kati-Blitz premise cable pulling device for pulling cables into conduits, even under difficult conditions.



The Kati-Blitz easily slips around curves and travels

through long sections of conduit, and in pipe systems where cables have already been laid. The Kati-Blitz consists of a unique Polykat fiberglass rod that is manually wound in and out quickly without knotting or forming loops. Threaded rod ends are attached at both ends of the rod, in which ca-

ble grips, pulling eyes or guide heads can be screwed on easily and quickly. With lengths of 50, 100 and 150 feet, the Polykat rod is housed in a solid, heavy-duty case that is light and compact, and easy to handle. The Kati-Blitz Vario has an exchangeable magazine that houses the fiberglass rod. The rod can be wound in and out fast with the hand crank drive. Both the pulling accessories and a pulling grip are supplied with the Kati-Blitz. (800) 321-7914, arncocorp.com

Almetek Industries

Don't be confined to the same old signs that will crack or peel over time. Confined spaces deserve the utmost care and consideration when posting an area. Confined Space Markers are made of high quality stainless steel and are designed to meet OSHA standards. Each marker is sand blasted and have turned down edges to ensure a strong bond with virtually any



MALÅ Releases Professional Explorer (ProEx) System



MALÅ has announced the release of the Professional Explorer (ProEx) System. At the heart of this new system is the ProEx Control Unit. Designed on a completely new technical platform, the ProEx is the most versatile control unit in the MALÅ range and replaces the CU11 as the new high-end full range system.

The ProEx is a modular control unit with multi-channel functionality; the base unit comes standard with two hardware channels (4 data channels). This allows connection of two separate antennas for simultaneous data collection while also providing a third "virtual antenna." By adding optional expansion units, the system can be expanded to eight hardware channels (16 data channels) to operate up to eight individual antennas.

A choice of three control modules (coax, optical and high frequency) allows the user to connect any MALÅ antenna in various configurations, for single, dual or multi-antenna operation. Thus enabling a wide range of advanced measurements to be carried out.

Another feature of the ProEx design is the new communication protocol, available as an option to customers.

The ProEx is fully compatible with the entire range of MALÅ antennas, the XV Monitor data acquisition platform and Windows-based Ground Vision acquisition software. (843) 852-5021, malags.com

surface, preventing theft of displacement. The 3-D embossed legends and aluminum inserts give these markers an attractive look while providing clear communication to the public, increasing are safety. (800) 248-2080, almetek.com

PFERD

New flap wheels eliminate the need to switch tools – 5/8 - 11 Quick Change Flap Wheels from PFERD mount directly on to right angle grinders.



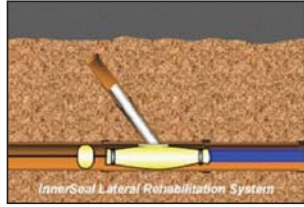
These versatile flap wheels provide stock removal,

long service life and uniform finishes on small- and medium-sized metal surfaces and workpiece contours. They are ideal for many general-use applications such as weld dressing, removing rust, paint, coatings and heat discoloration. Available in 4 1/2-inch diameter, these new flap wheels include

four aluminum oxide grit sizes – 40, 60, 80 and 120. (800) 342-9015, pferdusa.com

Perma-Liner Industries

The InnerSeal Connection System is designed specifically for the connection of service laterals to the main.



This product utilizes the same CIPP technology as lateral lining and point repairs. Designed for multiple connection repairs per workday, this system works effectively with all tee and wye connections from 8-inch by 4-inch to 15-inch by 12-inch connections. Lateral lengths are available from 18 inches to 50 feet and more. All materials have been third party tested to meet all requirements of ASTM F-1216-07a for use in sanitary systems. (866) 336-2568, perma-liner.com

Pipeline Inspection Co.

For intelligent pigging and other opera-

tions, the SPY pig tracking transmitters provide a continuous and burst mode option, which can be activated



in the larger PT 275 and 750 models via a switch inside the transmitter casing. On the smaller SPY PT 101 and 107, the continuous signal mode can be requested from the factory. SPY has the strongest signal strength and range available among all pig tracking transmitters. Simply install the transmitters inside the pig, launch the pig and wait for a signal using either a non-intrusive pig tracking sensor or an optional locating wand. These pig trackers can be used in 2- to 72-inch pipe diameters and are pressure and temperature resistant. The sensing units are lightweight and can be moved between locations without recalibrating or being permanently strapped to the pipe. (713) 681-5837, picltd.com

Ridgid SeekTech Provides Confidence To Locator



As the only utility locator for his department in a municipality in Illinois, Prezel Hardy often feels the pressure that a superhero may feel. Although he does not have to save the world and conquer other impossible feats, he does have to locate a variety of underground utilities with exact precision or else cause costly mistakes and injury to others.

Hardy became a locator four years ago, starting his career with the same municipality that he currently works for. Over the course of his career, he has tried different brands of locators. However, one has proven to be as versatile as the locating projects that Hardy locates. He first learned about the Ridgid SeekTech SR-20 locator in 2005 and soon after purchased one for his department.

"I was attracted to the SR-20 because of its lightweight, portability and how it fits ergonomically in the hand," said Hardy.



The SR-20 uses a combination of multi-directional antennas, a distinctive mapping display, and state-of-the-art processing to provide more information to effectively and easily locate underground utilities. The SR-20 not only traces transmitted frequencies, it also offers advanced passive modes that allow users to search for other metallic lines that might be present.

The SR-20's unique mapping display and audible tones help guide the user by showing:

- Target line direction and changes in direction as they occur;
- Left-right guidance arrows;
- Signal strength; and
- A proximity number that increases as the locator gets closer to the target.

According to Hardy, "I'm able to locate farther when I use the ST-33Q transmitter in conjunction with the SR-20. Pairing them in induction mode works best and was especially helpful when I used them to locate water lines."

The Ridgid SeekTech ST-33Q transmitter induces a stronger signal onto a utility line at a lower frequency. When used in direct hook-up mode, the ST-33Q transmits at up to five watts of power and has fully adjustable power output. In the same mode, the ST-33Q has preset frequencies of 128 Hz, 1 kHz, 8 kHz, 33 kHz, 93 kHz and 262 kHz. In addition, end users have the ability to set their own frequency offering the versatility of using it with any receiver.

Even water mains

Hardy explained that the city's water mains are connected with rubber gaskets. Prior to using the ST-33Q, he found it difficult to locate water mains because he could not transmit a signal onto the lines because rubber does not conduct electricity. Also, the depth of the lines and the corrosion that forms on the pipes makes it difficult to induce a signal.

"When I used direct hook-up with another locator, I was lucky to get 100 to 200 feet. Now, I put the ST-33Q transmitter over the prospective utility and locate between 200 and 400 feet, using the transmitter's induction mode," said Hardy. "Going that distance saves me time from having to pop open the manholes, use a wrench and connect my lead to the wrench. This poses a problem if I'm in the middle of the street because then I need to construct an extension for the leads from where I'm grounded."

Hardy also finds the SR-20's display screen invaluable. "It displays a lot of information – signal strength, visual of the utility line, and the peak and null arrows. It's very convenient to have this information all on one screen at one time."

Having this information at his finger tips along with the ST-33Q's induction capability, help Hardy save time on projects, particularly when he has to locate the city's streetlights.

"During the course of a day, I need to locate four or five streetlight poles in different locations, which requires that I expose each pole's wiring. The time it takes for me to get my tools out, unscrew the screws on the door openings at the base of each pole – hoping that someone else has been in the hole before me so that the screws are loosened and not over-tightened – it takes about 15 to 20 minutes per job. Spread that time over several jobs, it takes over an hour to locate," said Hardy. "Using the SR-20's induction mode on this project helped me save time."

"If your locating is off, people can lose their lives. Incorrect locating leads to having to relocate, which costs money," said Hardy. "I don't have x-ray vision like Superman. The SR-20 is my underground eyeballs."

Hardy had to rely on his "underground eyeballs" for a project that required him to locate one mile of water mains. The engineering department conducted a corrosion test, in which it tested salt levels on the water mains. The main water lines run from the city's water tower. In this mile run, there are two valves on the entire run, about a quarter mile apart. The purpose of the test was to check the acidic level in the soil. Too much acid in the soil can cause corrosion in the water main.

"Normally, I would try to align myself with the line and walk it, since I know how the line runs. However, it's not the most accurate way of doing things," said Hardy. "I used the SR-20 and had a crisp, clean signal on my screen where the utility was, the signal was not jumping around and the peak and null arrows were locked in. The first time I ever located this project, it took me three hours. With the SR-20, it took me less than one hour."

The ST-33Q also helped Hardy successfully locate the water mains. "Because the ST-33Q induces higher currents, I was able to locate the water mains," said Hardy. "I also liked the length of the leads of the ST-33Q transmitter."

"When I use the SR-20 and the ST-33Q together, it's like having another worker with me on a jobsite. I trust that its accuracy will help me get the job done."

FOR MORE INFO: (800) 769-7743, www.ridgid.com