

ISCO Industries



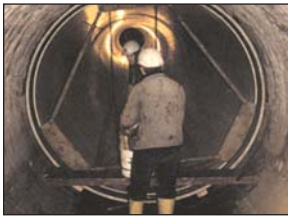
Snap-Tite is the no-dig solution to execute almost any spillway piping project. Snap-Tite is easy to install, and most jobs can be accomplished with a backhoe, shovels, a come-a-long and chains. There is no excavation required. The Snap-Tite

joint and installation system allows replacement of failing spillway piping and riser piping without the need to remove the existing deteriorated pipe. And, the Snap-Tite system is the most cost-effective way to rehab deteriorating dam spillway systems. (800) 233-1305, isco-pipe.com

HOBAS Pipe USA



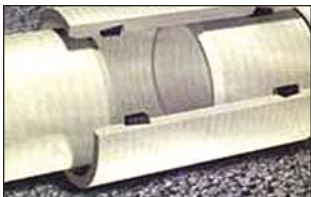
HOBAS pipe's high strength-to-weight ratio, smooth surface and flush, push-together joints are ideal for sliplining. Its superior hydraulic characteristics provide maximum flow recovery. The centrifugally cast, fiberglass-reinforced, polymer mortar pipe is inherently corrosion resistant. Smaller installation pits and longer pushes minimize surface disruption. Non-pressure and pressure classes are manufactured in diameters from 18 to 110 inches. (281) 821-2200, hobaspipe.com



Amitech USA

Light-weight, corrosion-resistant, Flowtite glass reinforced plastic (GRP) is available in over five pressure classes and four stiffness classes. Diameters from 12 to 96 inches are available and lengths up to 40 feet can be supplied, as well as custom diameters for sliplining applications.

Flowtite pipe is manufactured using the continuous mandrel process integrated with chopped roving and continuous glass fiber reinforcements in the circumferential direction. The result is a product with high hoop strength and axial reinforcement. Flowtite utilizes an elastomeric REKA gasket for sealing. The gasket sits in a precision-machined groove in each end of the coupling and seats and seals against a spigot surface. Other joining methods include standard ductile iron pipe; fittings and flanges, flexible steel couplings, mechanical joint or lay-up joints; and restraining joint for pressure applications. (866) 626-PIPE, amitechusa.com



Future Pipe Industries

Fiberstrong FRP Pipe is manufactured from a thermosetting polyester resin, continuous and chopped fiberglass reinforcement and may contain pure silica sand filler. Fiberstrong FRP filament is wound using continuous filament

winding equipment which is capable of producing pipe up to 158 inches in diameter in lengths of up to 50 feet. Fiberstrong FRP gravity sewer pipe is produced to ASTM D3262, while pressure pipes are produced to ASTM D3754, ASTM D3517 and AWWA C950 for water applications. Fiberstrong standard underground pipe utilizes a double bell coupling with two Reka saw-toothed gaskets that ensure water-tightness under all normal operating conditions. Fiberstrong pipe is available from three inch through 158 inch in 20 and 40 foot lengths. (281) 847-2987, futurepipe.com



Lamson Vylon Pipe

Vylon Slipliner pipe is made of PVC. The smooth interior and exterior walls and I-beam profile allows the manufacturing of diameters of pipe in 21 to 54 inches in diameter. Vylon Slipliner conforms to ASTM standards.

Joint tightness is achieved through its unique gasketed system which provides a tight seal that meets the requirements of the ASTM D-3212. The flush coupling does not reduce the interior diameter or increase the outside diameter of the pipe. Vylon Slipliner has a Manning "n" coefficient of 0.009. This low value will often allow a sliplined pipe to carry as much flow as existing pipe. (800) 382-0862, vylonpipe.com



CONTECH Construction Products

A2 Liner Pipe is designed for use in both initial development and rehabilitation of existing structures and sites. It permits fast, economical rehabilitation of aging storm and sanitary sewers via the popular

sliplining process. Rather than replacing deteriorated sewer systems, relining with A2 Liner saves time and money without interfering with service while minimizing open trench excavations. (800) 338-1122 contech-cpi.com



Ameron Intl.

Ameron offers both round and non-round, segmental section, gasket joined, Reinforced Polymer Mortar Fiberglass Pipe (RPMP) for the slipline rehabilitation of deteriorating water and waste water gravity or pressure pipe applications. This strong, durable, leak free joint pipe not only meets or exceeds all applicable ASTM and AWWA standards but also is

designed to provide the full structural loading capacity needed to replace the existing structure while preserving the maximum possible flow area of the existing deteriorated pipe regardless of the geometric shape of the host pipe. (909) 944-4100, ameronpipe.com



KWH Pipe

Weholite HDPE Profile Wall pipe is manufactured to ASTM F 894 in sizes 18 to 120 inches. Polyethylene Weholite pipe has the highest abrasion resistance of the most commonly used pipe materials and offers a 100-plus years service life.

With a Manning "N" of .010, Weholite can be used to slipline existing larger diameter culverts. Weholite's light weight allows contractors to use smaller equipment, reducing project costs. Weholite also has a smooth O.D., resulting in greater ease of installation. Sliplining with Weholite eliminates the closing of lanes on highways and county roads that cause costly traffic disruptions, commuter inconvenience, safety issues and higher overall projects costs associated with culvert replacement. (905) 858-0206, kwhpipe.ca