

First Look

Bore Pilot Aids In HDD Planning

Vermeer has introduced the Bore Pilot, a new planning tool to assist civil engineers, project owners and contractors who plan each step in making a horizontal directional drilling (HDD) installation from pre-planning to job-site clean up.

The CD-format tutorial was introduced in late January at the 2007 UCT (Underground Construction Technology International Conference & Exhibition) in Houston. It is available at no cost through Vermeer or its dealer organization.

"Bore Pilot was conceived as a method to educate civil engineers, public works officials and others involved in planning utility construction projects," said Ed Savage, Vermeer underground segment manager. "By helping project planners and owners understand the process, they will better understand when directional drilling is appropriate for a project and all of the ways HDD can be of benefit for their specific applications."

To plan an installation, the user can input project specifications. A pulling load calculator estimates the required force that will

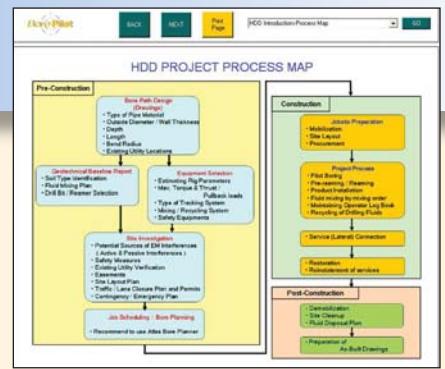
be required based on type and size of pipe, soil conditions and bore length. With this information and other job specifications, the calculator recommends the appropriate size of drill unit needed.

A soil classification guide helps determine the best bit and backreamer for the job. A fluid mixing process "map" indicates what type and how much fluid additive should be used for soil conditions, along with the drill unit and downhole tools to be used on the project.

"Bore Pilot takes the user through each step of the boring process and product pull-back. It covers safety issues, site restoration and includes a trouble-shooting guide," Savage said.

Two programs

Savage said Bore Pilot is not intended to replace Vermeer's Atlas Bore Planner which goes into aspects of a drilling installation in much more detail, providing graphic real-time visualization of the job, helping a crew see and perform an installation from start to finish.



"Although Bore Pilot could be useful for training personnel new to directional drilling, experienced crews use Bore Planner to assist in making installations," Savage said. "Bore Pilot is a powerful and beneficial tool, and we have received positive feedback from those who had an opportunity to use it during testing and at training events."

Vermeer is a leading manufacturer of utility construction equipment with a product line that includes horizontal directional drills, trenchers, vibratory plows, vacuum excavators, compact excavators and mini skid-steer loaders. Vermeer also manufactures agricultural and environmental equipment.

FOR MORE INFORMATION:

Vermeer Manufacturing, (888) 837-6337, vermeer.com