

Rehab Product Focus

SPOT/POINT REPAIRS

Ratech Electronics

The SnapLock repair system is a no-dig repair system that renovates the defective section of a sewer or pipe. No chemicals are needed for installation. It is the most economical and efficient system for the quick repair of damaged areas in a pipe whose overall condition make evacuation and the whole relining unnecessarily expensive. Made of high-grade stainless steel and surrounded by a rubber outer sleeve, the snap-lock system is highly durable and resistant to most chemicals including hydrogen sulphide. SnapLock is available in various diameters and lengths. (800) 461-9200, ratech-electronics.com



Masterliner

Masterliner's Sectional Pipe Renewal System will transform your problem area into a strong leak proof system in a matter of hours. The system offers a no dig, long term solution for spot repairs. Get the user friendly kits at factory direct prices. Features include improved flow characteristics; high strength, leak proof epoxy; and custom diameters and wall thickness. (985) 386-3006, masterliner.com



Perma-Liner Industries

Perma-Liner Industries has developed a Sectional Lining Point Repair Process that involves a short liner being installed inside the pipe to cover the damaged or missing pipe section. Complete kits are sized to suit the diameter, length and external loads. This process involves attaching the sectional point repair to a specialized bladder, then positioning the bladder over the damaged area inside the host pipe. The bladder is then inflated



and held in place until the thermo-setting resin is cured. Access points are required through upstream and downstream manholes. The Sectional Point Repair is considered a structural repair per ASTM F 1216 and is based on a minimum life expectancy of 50 years. The Perma-Liner Sectional Point Repairs can be installed in pipe diameters from 4 inches to 60 inches diameter and lengths from 2 feet up to 30 feet in length. The entire installation can be completed in less than 4 hours. The coated fiberglass product is ambient cured which means no steam or heat is needed. And the system restores partially collapsed pipes. (727) 507-9749, perma-liner.com

Miller Pipeline

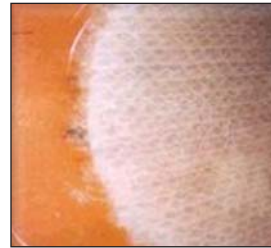
ENCAPSEAL Safe-T-Seal External Sealing Systems are designed for the permanent repair of leaks in all types, shapes and sizes of gas main joints, couplings and other distribution fittings. Isocyanates or any other identified



carcinogenic ingredients used in Safe-T-Seal are below NIOSH/OSHA established hazardous levels to the point where they are not required to be listed and not considered hazardous when used as instructed. Safe-T-Seal contains no coal tar or methyl ethyl ketone. No fresh air breathing equipment is required under NIOSH/OSHA when handling the material as directed. The ENCAPSEAL Safe-T-Seal formula is designed to handle pressures from inches of water column up to 60 psig on cast iron, steel and other piping. Safe-T-Seal's improved adhesive/cohesive performance in 95 degree humidity tests provides superior long term performance. Most repairs up to 25 psig, regardless of joint or fitting design, can be sealed using flexible, disposable fabric molds, making the sealing operation a single site visit. The Slot Kit, featuring a specially designed rubber mold, can be used for "small hole" installation with a vacuum mold excavator on low pressure bell joints. For pressures from 26 to 60 psig, reusable steel molds are used. (800) 428-3742, millerpipeline.com

AMerik Supplies

Fiber Spot Repair from AMerik Supplies is a highly adaptable liner and installation system that installs liners from 6 to 42 inch



diameter with lengths of 2 feet to 150 feet. Liners can be assembled, impregnated and refrigerated with better than 10 hours storage time or

impregnated on site. Steam curing ensures fully cured liners in less than one hour without the risk of curing before installation or not fully cured when the internal bladder is deflated, a common problem with ambient cured liners. Features include: epoxy impregnation ensures corrosion resistance; internal veil creates a gel-coat like inside surface; high strength, E-modulus 900,000 psi; engineered for 50 years per ASTM 1216; and new installers are field trained. (770) 924-2899, ameriksupplies.com

Logiball

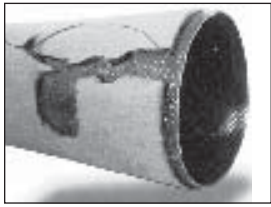
Logiball's Sleeve Installers are the ideal choice for contractors' point repair systems;



whether it consists of installing cured-in-place (ambient, hot water or steam cure) or mechanical locking sleeves. Sleeve Installers are available up to 50 feet long for 4 inch through 36 inch pipes. In their shorter version, the Sleeve Installers are used as end plugs to process manhole to manhole liners (deformed and reshaped, expanded and CIPP liners). The Sleeve Installers are made of a two-ply, cross-biased reinforced rubber sleeve resistant to hot water and even steam under pressure. The rubber sleeve is secured to the end plate through a series of wedging points for a strong and safe attachment even when the rubber is softened by exposure to high temperatures. For cured-in-place point repairs, Logiball recommends a sleeve installer with a rubber contact length of two feet longer than the length of the repair. (800) 246-5988, logiball.com

Williams Testing

MAGNALINE D is a trenchless cured-in-place spot repair solution for cracked or broken pipe ranging in size from 4 to 48 inches. MAGNALINE is a unique spot repair system, rendering a repair that is thinner, with little or no loss in pipe flow. It also provides a structural repair stronger than the



original pipe. MAGNALINE is steam cured in one hour, has no lip to gather debris, is WRc Type II approved

and is accepted worldwide. Other capabilities include repairing service connections to the main, repairing open joints, closure of abandoned services, stabilizing sheared pipe sections and eliminating root infested joints. (888) 921-7473, williamstesting.com

Infrastructure Repair Systems

Infrastructure Repair Systems' Sectionalized Repair is an advanced resin technology.



The ambient cured resin was formulated to perform in both warm and cold environments without the use of a promoter package. The liner is constructed using fiberglass, a highly absorbent felt and a protective mesh. The combination of the liner and resin yields a structural repair for damaged, cracked or broken gravity flow systems. Infrastructure Repair Systems maintains a facility in which both the resin and liner are manufactured, assuring the consumer the correct repair system for their requirements. (877) 327-4216, irsi.net

LMK Enterprises

LMK's Inversion CIPP Sectional Repair is vacuum impregnated. The liner/bladder assembly is loaded inside of a protective launching device. The resin-saturated liner is pulled into position, so the resin is not wiped off on the pipe or contaminated. The resin that provides a structural repair only contacts the pipe at the point of repair. For inversion sectional repair in diameters from 6 inches to 48 inches in continuous lengths up to 100 feet. (815) 433-1275, lmkenterprises.com



inside of a protective launching device. The resin-saturated liner is pulled into position, so the resin is not wiped off on the pipe or contaminated. The

resin that provides a structural repair only contacts the pipe at the point of repair. For inversion sectional repair in diameters from 6 inches to 48 inches in continuous lengths up to 100 feet. (815) 433-1275, lmkenterprises.com

INTERNAL JOINT SEALS

Miller Pipeline

Miller Pipeline offers WEKO-SEAL, the trenchless system for internally renewing leaking joints in any pipe from 16-inches



diameter up through 216-inch diameter and larger. Seals are flexible EPDM rubber leak cl a m p s that ensure a bottle-

tight seal around the full inside circumference of the pipe joint area. Installed internally with up to 5,000 feet between access points, they can be used in reinforced concrete pipe, cast iron, ductile iron, steel, cement lined or unlined pipe. (800) 428-3742, millerpipeline.com

Cretex Specialty Products

Cretex Specialty Products Internal Pipe Joint Seals are watertight compression



seals that allow differential movement of the pipe sections caused by ground movement and frost lift and reduce groundwater infiltration thereby increasing wastewater treatment capacity in underground pipes. Easily installed and designed for new or existing installations, excavation is not necessary for use. (262) 542-8153, cretexseals.com

NPC Specialty Products

FlexRib Manhole Frame-Chimney Seals and Internal Manhole and Pipe Joint Seals eliminate Inflow/Infiltration in manholes and pipe by mechanically sealing the joints. NPC offers the Internal Joint Seal to prevent infiltration by bridging the pipe or manhole joint with a flexible rubber seal and then compressing the rubber seal against the inside surface on both sides



of the joint with WedgeLock expansion bands. Each WedgeLock expansion band produces 3,600 pounds of force, creating a watertight seal capable of withstanding 34 feet of external head pressure. The WedgeLock expansion bands come in two or more sections so they can be easily brought through the manhole opening, and they only require a torque wrench for installation. The Internal Joint Seal is of premium quality rubber compound and stainless steel, and are available in three widths to accommodate a variety of applications ranging from closed or open joints, offset joints or lateral cracks that require a greater sealing area. NPC's Internal Joint Seals are available in diameters from 18 to 96 inches. (800) 626-2180, npc.com

Hunting Pipeline Services

With superior quality and intricate design detail, the HydraTite Sealing Sys-



tem guarantees a tight, leak-free seal at a substantial savings. Not only does the HydraTite Sealing System serve as an internal joint seal, it can also be transformed into an interlocking sleeving system custom designed to fit any length of pipe 16 inches in diameter and larger for water, wastewater, gas, industrial and power plant pipelines. (888) 538-6030, huntingssp.com