



## The Small Contractor's New Best Friend Ditch Witch 150R/T/B Locating System

The Charles Machine Works, manufacturer of Ditch Witch underground construction equipment, has introduced a compact electronic locating device designed to make the small contractor's job safer and easier.



The Ditch Witch 150R/T/B is an easy-to-use, inexpensive pipe- and cable-avoidance system

that detects common, active, passive and beacon frequencies. Consisting of a receiver, transmitter and an optional beacon, the 150R/T/B system is configured with the customer's choice of frequency at the time of purchase. Available frequencies are 640 Hz, 30 kHz and 83 kHz. Pre-bundled packages are available that meet most contractors' requirements.

The optional beacon enables the user to trace water, sewer and drain lines. With its simple user interface – only four buttons and an easy-to-read display – even novice users can quickly learn to operate the 150R/T/B, minimizing training time and increasing productivity. To ensure safety and eliminate confusion, color-coded decals identify the frequency on which the transmitter, receiver and beacon operate.

The 150R/T/B comes with a convenient carrying bag, so it's easy to transport to remote locations. A handy flap allows easy access to the transmitter, so it can remain in the bag. And because it weighs only a little more than five pounds, the 150R/T/B can be used all day without wearing out the operator. Both the receiver and transmitter use common "C" alkaline batteries. The 150R/T/B is built to last, with rugged, rain-resistant housings that stand up to even the harshest construction conditions. (800) 654-6481, ditchwitch.com

## Multiquip

Multiquip's three new MTX-Series rammers incorporate an exclusive anti-vibration system (AVS) which significantly cuts vibration to the user for greater productivity on the job site while reducing the risk of injury caused by operator fatigue. The MTX-70, MTX-80 and MTX-90 gasoline-powered models deliver up to 3,500 pounds of impact force for effective compaction of cohesive and mixed soils. The MTX-70 delivers 2,900 pounds of impact force on 645-695 blows a minute. Fueled by a 3-horsepower Honda GX100 engine, this model weighs 146 pounds. The MTX-80 generates 3,150 pounds of centrifugal force and is driven by a 3.5-horsepower Robin EH-12-2D engine. The rammer weighs 179 pounds. The MTX-90 generates 3,500 pounds of impact force on 660-700 blows per minute. It is also powered by a Robin EH-12-2D engine. All three MTX Series rammers feature recoil start, travel speeds of up to 36 feet per minute, and diaphragm carburetors that allow operators to transport the unit without flooding the engine. The shoe width is 11.2 x 13.4 inches on each model. (800) 421-1244, multiquip.com



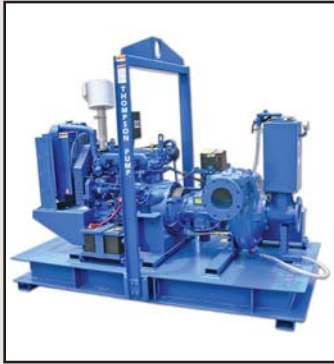
## TT Technologies

Burst and replace water, sewer and other pipes with the Grundoburst static pipebursting system from TT Technologies. Pulled by a hydraulic bursting unit, the cutter head's special cutting wheels split the host pipe. An attached expander spreads and displaces the split pipe into the surrounding soil while simultaneously pulling in the new pipe. The Grundoburst is able to burst ductile iron, steel and fracturable pipes as well. Patented Quicklock bursting rods are linked together not threaded. This saves time, prevents twisting and extends the life of the cutter head over threaded bursting rods. Six models are available for bursting two-inch through 54-inch pipes and larger. (800) 533-2078, tttechnologies.com

## Correction

In *Underground Construction's* December 2006 issue, pg. 72, the photographs for Thompson Pump & Manufacturing and Rain for Rent were incorrect. We apologize for any confusion this may have caused.

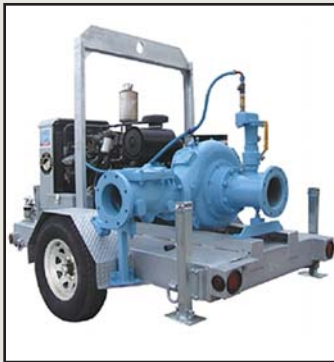
### Thompson Pump & Mfg.



Thompson's JSC Series Solids Handling ENVIROPRIME pump is ideal for municipal, industrial and mining applications. With its heavy-duty cast-iron construction and ability to

dry-prime and re-prime automatically, this model is ideal for sewage bypass and general construction dewatering applications. The six-inch pump is designed for flows to 2,500 gallons per minute, maximum heads to 195 feet, and can handle solids up to 3 inches. This pump also features the ENVIROPRIME compressor-assisted dry priming system which prevents blow-by, such as sewage and waste, from discharging onto the ground, making it environmentally safe. The sturdy, weather resistant, sound attenuated Silent Knight canopy is also available on Thompson's JSC series and allows the pumps to operate at 67dBa. (386) 944-4114, thompsonpump.com

### Rain for Rent



Reduce bypass pumping and dewatering operational and maintenance costs with Rain for Rent's new eight-inch, DV-200c pump. Superior fuel efficiency, increased hydraulic efficiencies up to 81 percent, solids handling to 3.375 inches, and great suction lift performance make the DV-200c the best choice for tough pumping projects. The galvanized trailer resists corrosion, eliminating expensive repainting costs. Flows up to 4,500 gpm and heads up to 260 feet make the DV-200c a leader in pump performance. (800) 742-7246, rainforrent.com

### Kawasaki

Kawasaki loaders feature Cummins diesel engines offering 96–720 flywheel horsepower, 1.8–13 cu. yd. bucket capacities. The new ZV-2 wheel loaders feature upgrades that allow the operator to customize the wheel loader performance to the environment or application.



Dual Power Mode Cummins engines allow the operator to select the appropriate torque curve. Adjustable Declutch allows the operator to not only set the declutch, but

to adjust the engagement point. Efficient Loading System, (ELS) allows the operator to increase rimpull and digging power and decrease fuel usage. Machine Operation Diagnostic Module (MODM) although primarily used for diagnostics, the MODM will also allow an operator to adjust K-Lever (Stick Steer) steering sensitivity, ride control sensitivity, and transmission shift points. Without the use of additional software or equipment, the MODM taps into the machine controller and monitors all systems to sound faults and alarms. It also records relevant data and failure codes for future analysis. Enhanced features include: dual boom kickout; ride control; K-Link (II); and limited slip differentials. (770) 499-7000, kawasakiloaders.com

### Tinker & Razor

The Model APS high voltage holiday detector with regulated voltage has a range of 800 volts to 35,000 volts, giving complete coverage for coating specifications.



The instrument has been ergonomically designed with an angled handle and an open grip design that takes into account different hand and glove sizes. Other features include: patent pending safety switch for increased jobsite safety; digital voltmeter display; LED

Holiday Indicator - easily seen in bright daylight; volume controls for noisy environments; regulated voltage; large push button controls; greater battery efficiency; and compatible with Model AP/S1 and AP/S2 components and accessories. (626) 287-5259, tinker-razor.com

### Capital Safety



DBI-SALA introduces the new Rescue Davit System, a rescue and retrieval system ideal for confined spaces. The lightweight and portable Rescue Davit System consists of two pieces, a base and a winch/davit arm, each weighing only 38 pounds. In just three easy steps, the entire system can be set-up in minutes and is ready to use. It features securing straps and a carrying handle, making transportation and storage quick and easy. The Rescue Davit System is equipped with a 360-degree swiveling davit arm that provides flexible entry and

exit, making it readily adaptable to extreme environments and uneven terrain. Rubber bumpers on the davit arm and base help reduce pinch points. The 50-foot built-in rescue winch is activated by rotating the handle for lowering or raising. For added safety, DBI-SALA added a heat resistant synthetic lifeline to help protect against electrical conductivity and sparking. (800) 328-6146, capitalsafety.com

## Selectable Joystick Controls Now Available On Bobcat Loaders



With selectable joystick controls (SJC) now available on Bobcat S130 and T140 loaders, operators can have drive and hydraulic controls at their hands and receive the advantages of having speed and horsepower management. SJC is already available on larger skid-steer and compact track loader models from Bobcat Company.

For operators accustomed to different styles of loaders, the SJC option allows them to choose between "ISO" or conventional skid-steer "H" control patterns. The controls make the loaders more user-friendly because operators can choose the driving style they prefer.

SJC is electrically switchable from the cab. When the Bobcat SJC switch is in the "ISO" position, the left joystick operates the drive functions, and the right joystick controls the lift and tilt functions. In the "H" position, the left joystick controls the left wheels and lift arm functions, while the right joystick controls the right wheels and the attachment tilt functions.

The option also features horsepower management to maximize pushing and digging power and hand engine speed controls with an accelerator foot pedal. The speed management feature can be activated from inside the cab to provide more consistent loader and attachment performance while minimizing the strain on operators. With speed management, operators can simply "dial in" their required travel speed in small increments from 0 to 7 mph, while maintaining driveline torque and full hydraulic power. (866) 823-7898, bobcat.com



### Universal Valve

The Universal Sump Cover Replacement System is designed to replace fiberglass and polyethylene covers that leak. These units are installed in less than 10 minutes with field adjustable clamps. The rugged steel ring and cover and double seal design keep your sumps completely dry. The standard units fit sump openings from 27 to 34 inches. Custom sizes are available and more standard sizes to come. (800) 223-0741, universalvalve.com

## Rehab Products

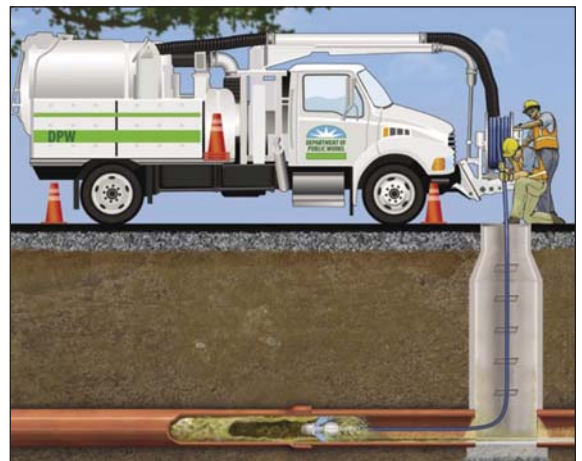


### Vacmasters

The VACMASTERS SYSTEM 1000 is a trailer or truck-mounted system that also has water on board. With the SYSTEM 1000, you can dig effectively in any kind of soil, using air 95 percent of the time. A John Deere diesel engine drives all systems: vacuum, air and water. A cyclonic filtration system is highly effective for wet or dry applications for fast and easy cleaning. Hydraulic powered pumping makes quick, easy emptying of large 300-gallon or optional 500-gallon spoils tank. Automatic monitoring of all systems with auto-shutdown allows a two-man crew to operate the system. Operate up to 200 feet away for areas difficult to access. An optional Barrel-Top Interceptor keeps the spoils at the digging site. For quiet operation, a high efficiency absorption chamber silencer and enclosed power head minimize noise levels. For low maintenance design, monitor and maintain oil levels, follow recommended checks and adjustments, and occasionally clean the polyester filter. (800) 466-7825, vacmasters.com

### Duke's Root Control

Duke's Root Control offers a Grease Liquefier, Jet Power II, which dissolves grease on contact and homogenizes it so it cannot re-coagulate. Jet Power II is non-petroleum based. It is biodegradable, non-caustic, non-acidic and non-corrosive. It is applied quickly and easily with your own jetting equipment. (800) 447-6687, dukes.com



### AP/M Permaform

I & I BARRIER provides permanent barrier from inflow/infiltration at the concrete adjusting rings when resetting the frame. Easy to set and trim to height. Made from PE for long life. (800) 662-6465, permaform.net