

PRODUCT FOCUS

REMOTE INSPECTION EQUIPMENT



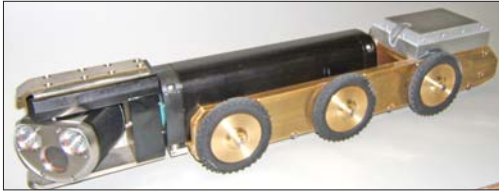
CUES

The LAMP makes the work of mainline and lateral inspection simple and quick with the highest quality video. The self-propelled LAMP

is designed to perform a one-pass pan-and-tilt inspection of the mainline at up to 60 feet/minute and lateral services at up to 30 feet/minute, displaying mainline and lateral footage as it goes. The LAMP optically centers the pan-and-tilt mainline camera and provides ample illumination for mainlines ranging from 6- to 24-inch diameter and laterals ranging from 2- to 8-inch diameter. The lateral probe comes standard at 80-foot lengths, but may be ordered in extended lengths. A sonde for locating laterals is optional. Color video from the two high-resolution cameras is displayed in a picture-in-picture format, making the launch of the camera into the lateral a quick and easy process. The LAMP can also be used to verify the quality of rehabilitation processes such as lateral and mainline relining and spot repair. The system can be mounted in a truck or retrofitted to most existing truck-mounted CCTV systems. (800) 327-7791, cuesinc.com

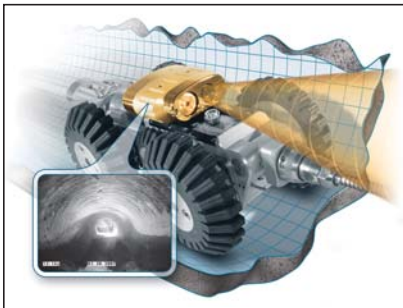
RS Technical Services

The TranSTAR Transporter inspects lines 6 to 24 inches with this six-wheeled, all gear driven transporter. A high-torque 1/8 horse-



power rare earth PM motor lets the TranSTAR achieve speeds up to 70 feet per minute. No

need to coordinate the transporter's reverse speed and reel with the TranSTAR; a freewheel clutch allows rapid retrieval once inspection is complete. Alternate gear sets, wheel sizes and axle extensions optimize speed and torque and equip the RST TranSTAR for easily changing loads and adapting to various pipe sizes. Power and control commands are derived from a durable, reliable, single conductor, double armored steel cable. TranSTAR is less than 19 inches in length, and weighs 27 pounds. TranSTAR accommodates Omni-Eye III and the NovaSTAR camera. (800) 767-1974, rstechserv.com



Envirosight

The new BackEye auxiliary camera lets a ROVER operator see behind the crawler in order to steer around obstacles and prevent cable tangles during reverse travel. The accessory also includes three forward-facing narrow-beam LED

lamps to improve forward viewing. It is available as a retrofit for existing ROVER 125/225 crawlers, and as an option for new ROVER 125/225 crawlers. BackEye's ultra-sensitive (0.005 lux) monochrome camera uses compact infrared illumination while con-

suming just 0.8 watts of power. The camera's 1/4-inch CCD imager measures 765 x 582 pixels, allowing it to capture video at high-resolution. Automatic shutter and white balance ensure optimum video exposure. To improve forward viewing, BackEye also incorporates three (125 Series) or six (225 Series) 5-watt LED lamps, each focused to a 5-degree beam for maximum range. These lamps augment the illumination built into ROVER's forward-viewing inspection camera. BackEye is made of stainless steel and anodized aluminum. Makrolon windows protect the forward-facing LED lamps and rear-facing IR lamp; a scratch-resistant sapphire window protects the rear-viewing camera. The accessory measures just 3.75 x 3.39 x 1.46 (inches) and attaches/detaches easily to the ROVER top-plate. (973) 252-6700, envirosight.com

Moffatt Enterprises

Test each pipe joint as it is laid in less than 30 seconds for leaks, before it is buried without pressure. An ultrasonic transmitter is used in coordination with an ultrasonic detector. The detector converts inaudible ultrasonic signals into audible tones and amplifies them for ease of detection. By placing the transmitter on the inside of a pipe or test item, the signal will seek out and penetrate any hole in the pipe or joint. (541) 548-1144



Aries Industries

Pathfinder utilizes brushless drive motors with electronic clutches in the tractor. Brushless motors are virtually maintenance free, while providing 70 percent more power than brush-type motors of similar size. Plus, Pathfinder's steerable six-wheel drive has forward, reverse and neutral, to add even longer life with less

maintenance. High intensity, 10,000 hour LED camera lighting, along with a lifetime warranty on auxiliary and rear-view camera LED lighting are unique features of this CCTV inspection manufacturer. Inspection capability ranges from a relined 6- to 36-inch pipe, at lengths up to 1,200 feet. (800) 234-7205, ariesindustries.com

GE Inspection Technologies (Everest)

The new Ca-Zoom PTZ70 camera head for remote visual inspection is the smallest in diameter and now the third interchangeable camera head for the Everest Ca-Zoom 6.2 product family. The PTZ70 camera is 2.75 inches in diameter and features 40x total zoom (10x optical zoom; 4x digital zoom), eight 4-



PRODUCT FOCUS

REMOTE INSPECTION EQUIPMENT

watt LED lights with variable intensity control, and 360-degree continuous pan direction. The Ca-Zoom 6.2 system can also operate the PTZ100 and PTZ140 camera heads utilizing the same cable and Camera Control Unit. GE's Ca-Zoom 6.2 puts inspection and digital image management in the palm of your hand with three interchangeable camera head options, integrated image capture, full-motion video recording capabilities and comparison measurement features. (888) 332-3848, geinspectiontechnologies.com

UEMSI



The Predator Advantage uses a cabled push reel, push skid and camera head; and the portable mini camera system can inspect laterals up to 250 feet long. Mainline inspections are easily conducted when the Predator Advantage PCU is paired with a mini mainline reel and a tractor (or a main-

line skid assembly with a winch package). The Predator Advantage PCU features the following built-in controls: color monitor; two or

four head VCR; interchangeable light-head control; tractor control; connection for the Explorer pan & tilt camera remote control; and a microphone jack. (800) 789-7611, uemsi.com

ULC Robotics

A new camera system that accesses pipes through 18-inch diameter surface "keyholes" is capable of examining pipe conditions while gas is flowing and conducting inspections without



interrupting service to customers. The PRX250K Keyhole Camera is small and flexible, making it easily maneuverable through tight bends, allowing utilities to examine pipe segments without the need to drill additional access holes for hard-to-reach locations. The system provides visual pipe inspections, measures distance of travel, and allows the operator to map the precise locations of joints and fittings observed on the monitor. In the field, the camera can capture footage in three different ways – on the hard drive of the unit, on magnetic tape, or on a CD. The keyhole camera is rated for use up to 60 psig and can be used to inspect 4- to 12-inch diameter cast-iron, steel or polyethylene (PE) pipe. Travel distances will vary based on pipe size, pipe material, condition/cleanliness and the pitch of the pipe. (631) 491-7473, ulcrobotics.com